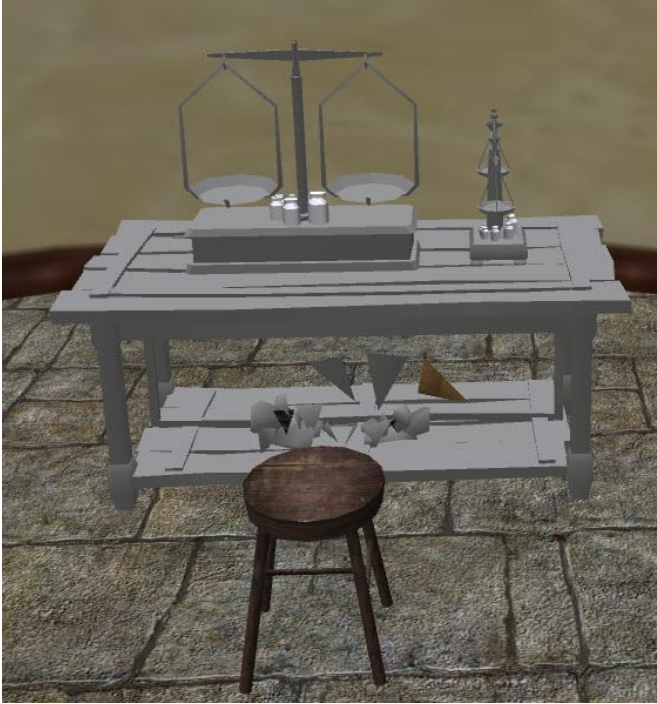


# Money, Gem, and Pearl Assay & Exchange

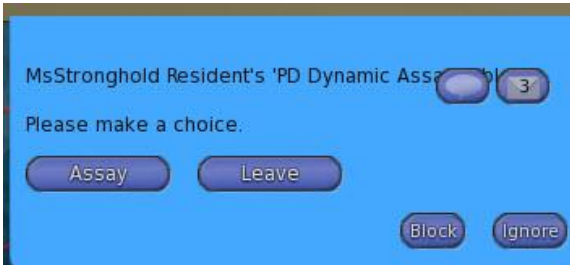
The Assay Office and Money Exchange is where you can Change your coins to different coins, crystals to gems, and ingots to coins. Note that using these and all other things in PD you are required to wear your combat meter and be in the RP mode.

## Assay Table (left side when you enter the building):

1. Sit on the stool of the Assay Table.



2. Rez your crystals and ingots on the floor beside the table.
3. Right click the stool and work or sit. The blue assay menu will come up.



4. Click Assay in the blue menu.
5. The table takes it from there evaluating the quality of the crystal or ingot, and sends the amount of coins to your inventory.
6. NOTE: The amount of coins it gives you for your crystals and ingot will vary dependin on the quality of the item. You'll see messages like this:
  - a. PD Dynamic Assay Table: The Brass Ingot is of poor quality
  - b. Sent 1 x ~PD Brass coin~to your inventory.

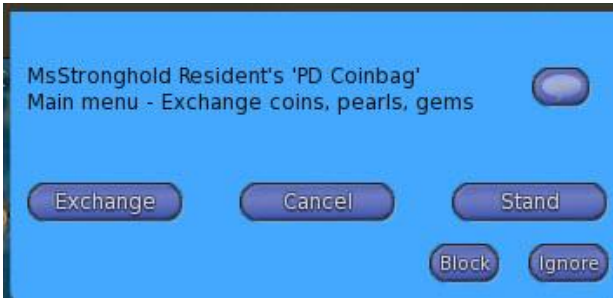
# Money, Gem, and Pearl Assay & Exchange

Exchange table (right side when you enter the building):

1. Sit at the table and click the money bag on the table.



2. Look at the numbers on the table and it will reflect the coins, gems, and pearls you have in your PD HUD.
3. Click the money bag again, and you will see this menu:

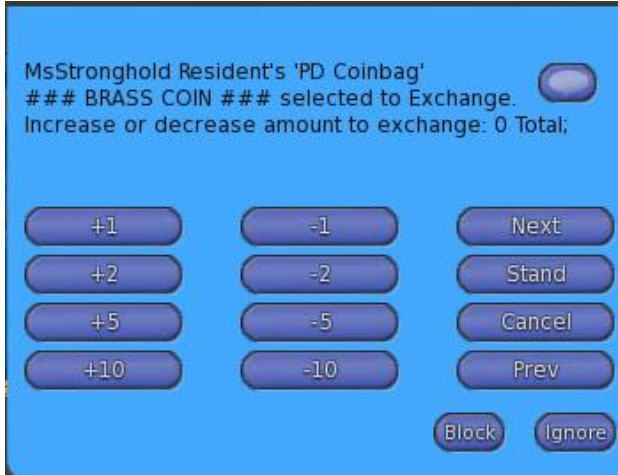


4. Click exchange and you will see this menu:



5. I exchanged silver for brass so I clicked Silver, and this menu came up:

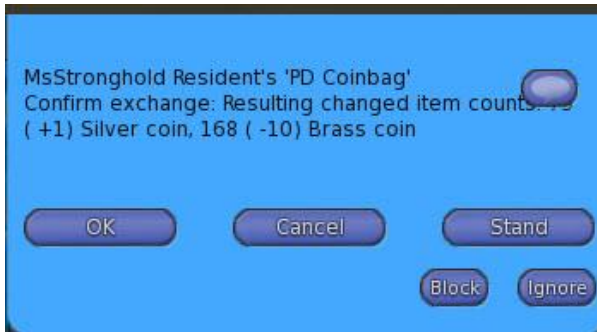
# Money, Gem, and Pearl Assay & Exchange



6. Since I changed 1 silver coin for 10 brass coins, I clicked +1, then clicked next. Then this menu came up:



7. I want brass coins so I clicked Brass coin, then this menu comes up:



8. Now click okay and watch the numbers on the table. You should see the silver coin number decrease by 1, and the brass coin number increase by 10.

You can use this to exchange gems and pearls as well.